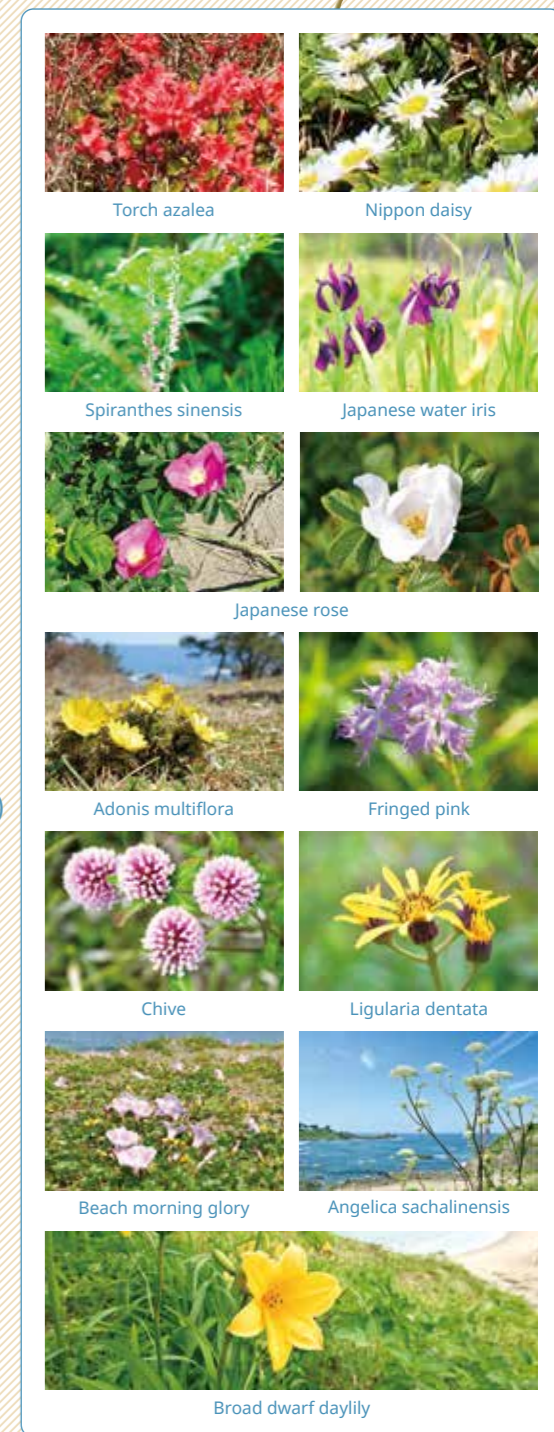
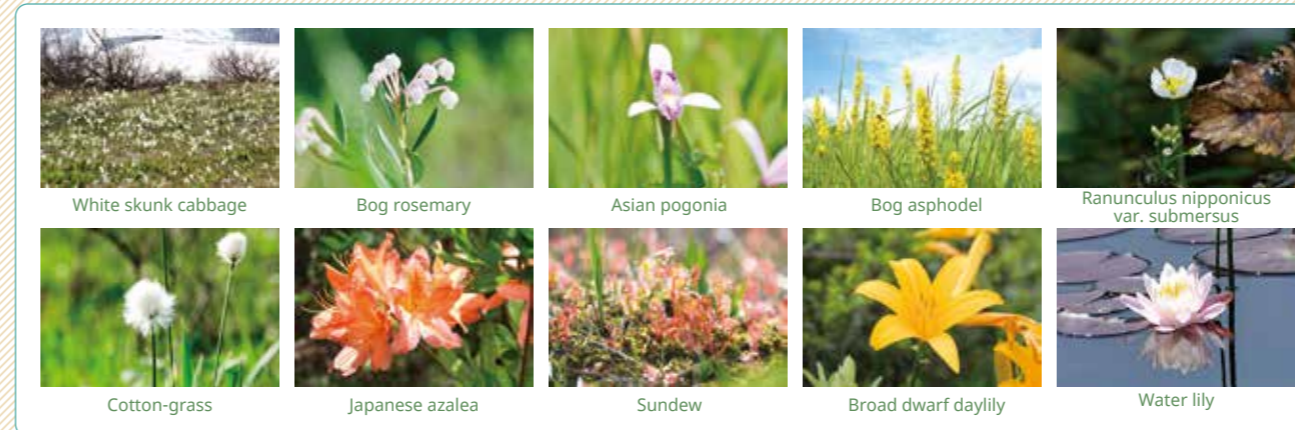
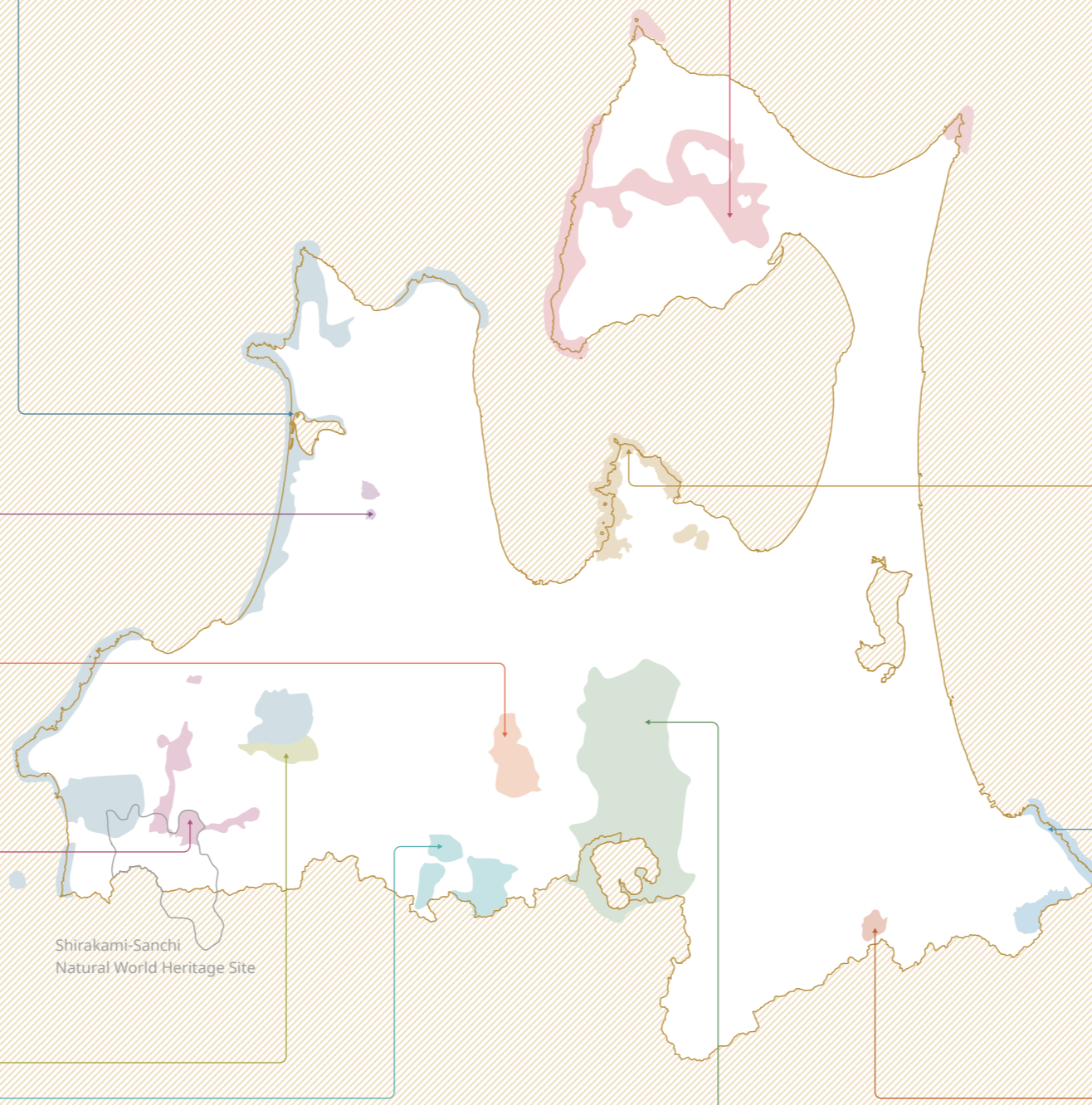
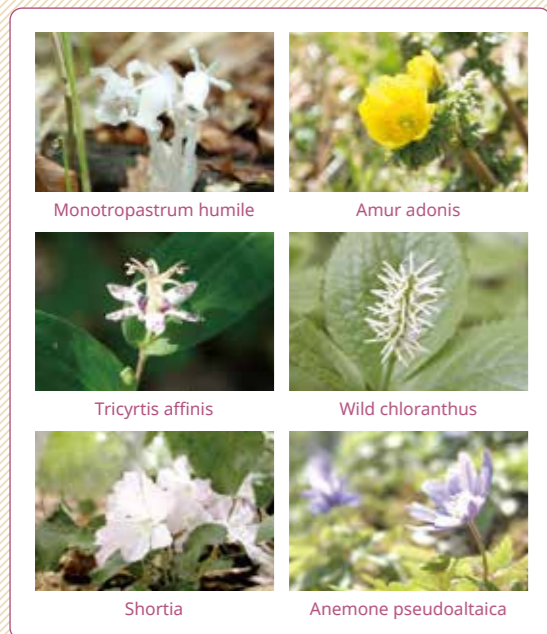
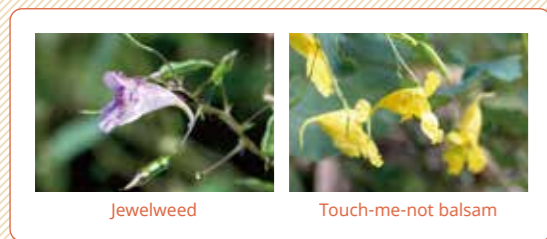
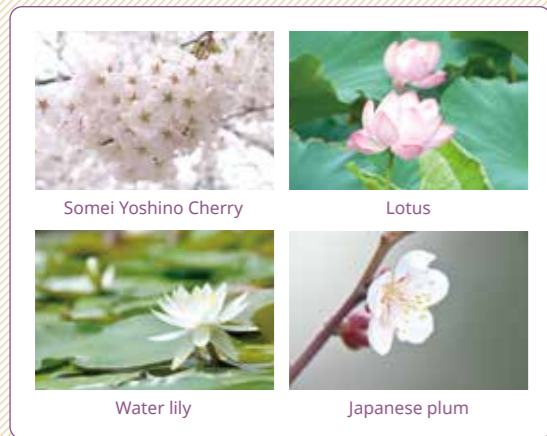
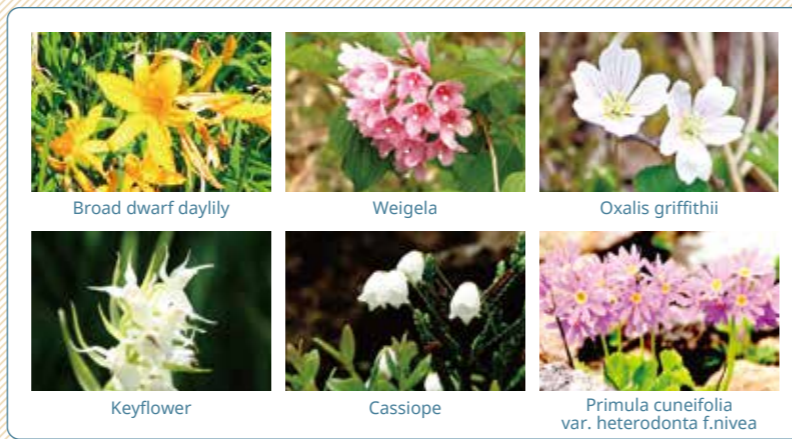


Plants in the Nature Parks





Nature Parks in Aomori

Rules & Etiquette



Rules & Etiquette in Nature Parks

Rules

Please follow these rules to conserve Aomori's nature parks for the future.



Please do not pick or take home any plants or animals. Do not take home any pebbles or stones.

Do not pick or take home any flowers or trees that you see. Enjoy them in their original setting. It takes years for them to grow back.



Camping and bonfires are prohibited.

Enjoy camping and bonfires only in the specified locations. Doing so elsewhere may cause fires or damage the plants.



No graffiti or vandalism.

To conserve nature, do not draw any graffiti or vandalize the park facilities or plants. These parks are for everyone. Graffiti is a criminal offense (property damage).

Etiquette

Remember to keep the park clean for everyone to enjoy.



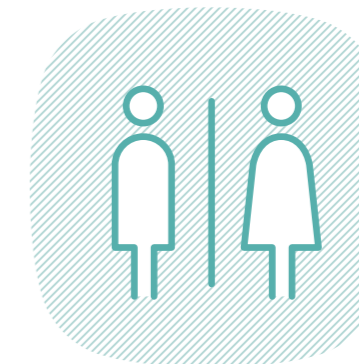
Do not set a tight itinerary.

Be sure to check the climate, transportation access, road conditions, and volcano information in advance. Be sure that your itinerary is not tight. Avoid accidents.



Drive safely.

Running into or over wild animals will cause injury to people and wildlife. Do not drive into restricted areas.



Please use the toilet facilities prior to entry.

In some areas, there are no restrooms. Use the restroom in advance, or bring a portable toilet.



Please do not leave the walking paths.

Do not trespass into roped-off areas or go off the wooden paths. Doing so damages plants and their habitats.



Take all garbage home.

Take home all garbage (including leftovers, packaging, and cans) to conserve the natural landscape. It is wrong to assume that leaving behind food and drinks is fine because they will decompose.



Be careful of rising and receding tides.

Obtain sufficient information in advance, check warnings, and avoid accidents on the coastline.



Do not feed wild animals.

Feeding wild animals may lead to accidents and injury, and it also damages the ecosystem. Do not feed wild animals.



Smoke only in designated areas.

Take all cigarette stubs and ashes home because they may cause a fire. Smoke only in designated areas, and always carry a portable ashtray with you.



No loud talking. Be considerate of others.

Do not cause trouble, such as making loud noises, having loud conversations, blocking pathways or pedestrian walks, or trespassing onto private property.